



## Gillette Stadium

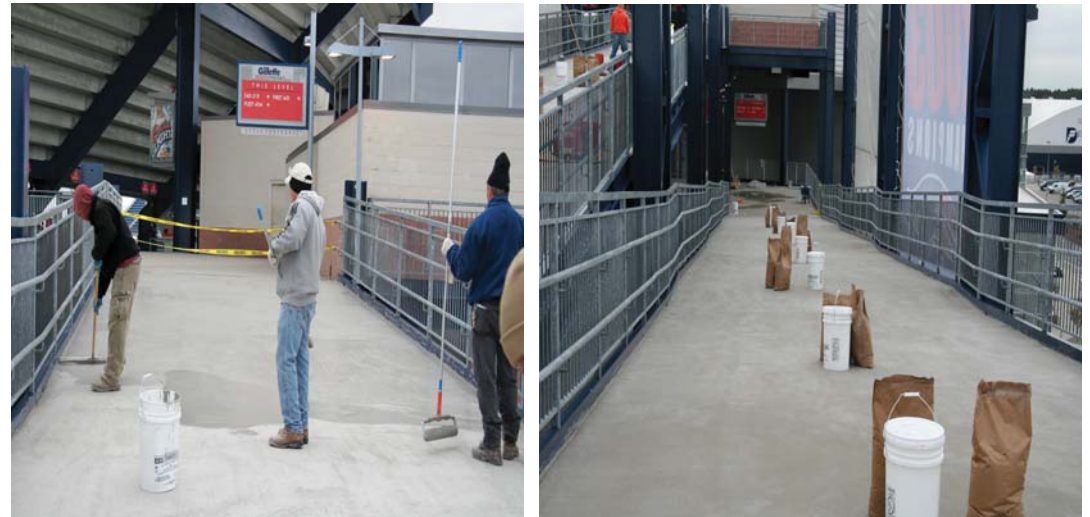
Installation  
2005

The concourse walkway and ramps were scaling and the aggregate was exposed. Due to its abrasion resistance, slip resistance and breathability, SC-113 vehicular grade coating was chosen to restore the surface.

Location  
Route 1  
Foxboro, MA



Materials  
Strongcote SC-113  
Vehicular Grade Coating



Deck  
Metal Pan

Architect/Engineer  
Gillette Stadium  
Foxboro, MA

**swi** Strongwall Industries, Inc.

Manufacturers of Concrete Restoration and Protection Systems

107 Chestnut Street  
Ridgewood, NJ 07450

Tel: 201.445.4633