



Missouri Athletic Club

Installation

2009

Location

405 Washington Avenue
St. Louis, MO 63102

Materials

SW-81 Horizontal Repair Mortar
SC-113 Traffic Grade Membrane
System

Contractor

Tarlton Corporation
5500 West Park Avenue
St. Louis, MO 63110

Architect/Engineer

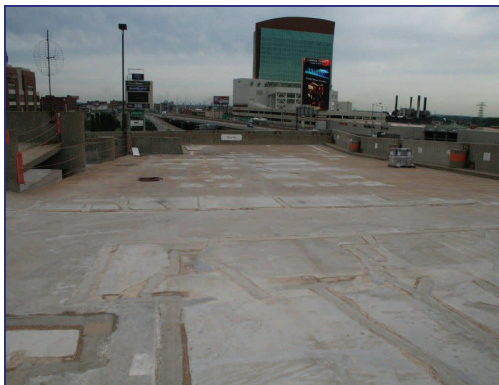
SSE Inc.
138 West Clinton Place
Kirkwood, MO 63122

Sales Representative

Tom Suter, President
Shield Systems, Inc.
5205 Bischoff Avenue
St. Louis, MO 63110
Office: 314-865-5550

After several years of routine maintenance on the Missouri Athletic Club parking garage, the club decided it was time to take a comprehensive approach to repairing and protecting the parking structure that supports the daily use of members and guests.

SSE Engineers was hired to perform a thorough evaluation of the concrete structure. Their recommendation included repair of the failed concrete with Strongwall's Strongcrete repair mortars followed with Strongcote SC-113 Traffic Membrane on the 55,000 SF top level decks



Strongwall Industries, Inc. 107 Chestnut Street, Ridgewood, NJ 07450 **Website:** www.strongwall.com
Office: 201-445-4633 ♦ **Fax:** 201-447-2317 ♦ **Email:** strongwall@strongwall.com