



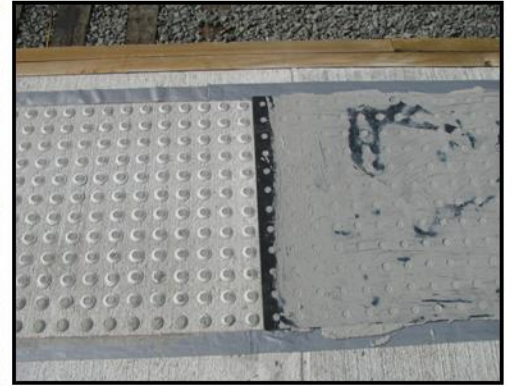
Strongwarn Installation Photo Tutorial



#1 - Shot blast platform



#2 - Lay out molds along edge of platform



#3 - Apply #82 dome mixture into molds, filling all holes. Allow to cure



#4 - Carefully remove molds from domes



#5 - Wash molds



#6 - Apply 2 coats #32 Field mixture, allowing min 1 hour between coats. Allow final coat to cure min.12 hrs



#7 - Apply 2 coats #4 Sealer allowing min. 1 hour between coats . Allow to cure 12 hours before opening up to traffic

Strongwall Industries, Inc.

107 Chestnut Street • Ridgewood • NJ • 07450

Office: 201-445-4633 • Fax: 201-447-2317

Email: strongwall@strongwall.com Website: www.strongwall.com